



# CBP80 Polyclonal Antibody

<b>Catalog No</b>	YP-Ab-01591
<b>Isotype</b>	IgG
<b>Reactivity</b>	Human;Mouse;Rat
<b>Applications</b>	WB;IHC;IF;ELISA
<b>Gene Name</b>	NCBP1
<b>Protein Name</b>	Nuclear cap-binding protein subunit 1
<b>Immunogen</b>	The antiserum was produced against synthesized peptide derived from human NCBP1. AA range:1-50
<b>Specificity</b>	CBP80 Polyclonal Antibody detects endogenous levels of CBP80 protein.
<b>Formulation</b>	Liquid in PBS containing 50% glycerol, 0.5% BSA and 0.02% sodium azide.
<b>Source</b>	Polyclonal, Rabbit,IgG
<b>Purification</b>	The antibody was affinity-purified from rabbit antiserum by affinity-chromatography using epitope-specific immunogen.
<b>Dilution</b>	WB: 1/500 - 1/2000. IHC: 1/100 - 1/300. ELISA: 1/20000.. IF 1:50-200
<b>Concentration</b>	1 mg/ml
<b>Purity</b>	≥90%
<b>Storage Stability</b>	-20°C/1 year
<b>Synonyms</b>	NCBP1; CBP80; NCBP; Nuclear cap-binding protein subunit 1; 80 kDa nuclear cap-binding protein; CBP80; NCBP 80 kDa subunit
<b>Observed Band</b>	80kD
<b>Cell Pathway</b>	Nucleus . Cytoplasm . Localized in cytoplasmic mRNP granules containing untranslated mRNAs. .
<b>Tissue Specificity</b>	Brain,Epithelium,Placenta,
<b>Function</b>	function:Involved in mediating U snRNA export from the nucleus. Binds to 5' capped mRNA.,similarity:Belongs to the NCBP1 family.,similarity:Contains 1 MIF4G domain.,subunit:Found in a U snRNA export complex with RNUXA/PHAX, CBP20, CBP80, RAN, XPO1 and m7G-capped RNA. Interaction with RNUXA/PHAX (By similarity). Heterodimer with NCBP2. Is part of the exon junction complex (EJC) containing NCBP1, NCBP2, RNPS1, RBM8A, SRRM1, NXF1, UPF3B, UPF2, THOC4 and/or REFBP2.,
<b>Background</b>	The product of this gene is a component of the nuclear cap-binding protein complex (CBC), which binds to the monomethylated 5' cap of nascent pre-mRNA in the nucleoplasm. The encoded protein promotes high-affinity mRNA-cap binding and associates with the CTD of RNA polymerase II. The CBC promotes pre-mRNA splicing, 3' end processing, RNA nuclear export, and nonsense-mediated mRNA decay. [provided by RefSeq, Jul 2008],



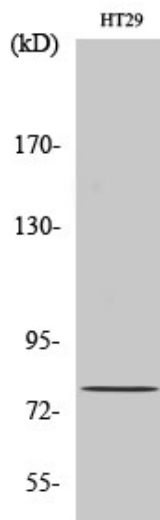
### matters needing attention

Avoid repeated freezing and thawing!

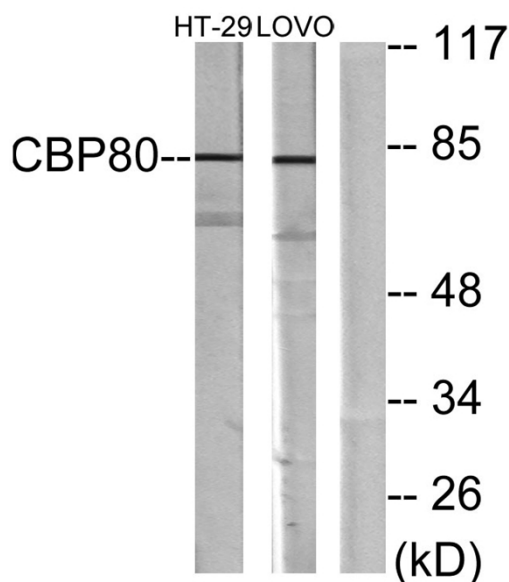
### Usage suggestions

This product can be used in immunological reaction related experiments. For more information, please consult technical personnel.

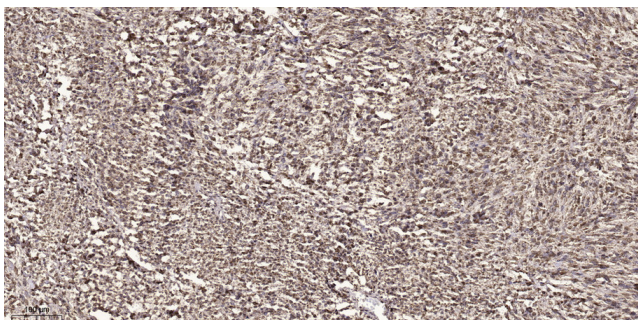
## Products Images



Western Blot analysis of various cells using CBP80 Polyclonal Antibody diluted at 1:500



Western blot analysis of lysates from HT-29 and LOVO cells, using NCBP1 Antibody. The lane on the right is blocked with the synthesized peptide.



Immunohistochemical analysis of paraffin-embedded human small intestinal carcinoma tissue. 1, primary Antibody was diluted at 1:200 (4° overnight). 2, Sodium citrate pH 6.0 was used for antigen retrieval (>98° C, 20min). 3, Secondary antibody was diluted at 1:200